



# ONE ISLINGTON PLAZA CONSTRUCTION UPDATE

July 2019



---

# ONE ISLINGTON PLAZA

## CONSTRUCTION UPDATE

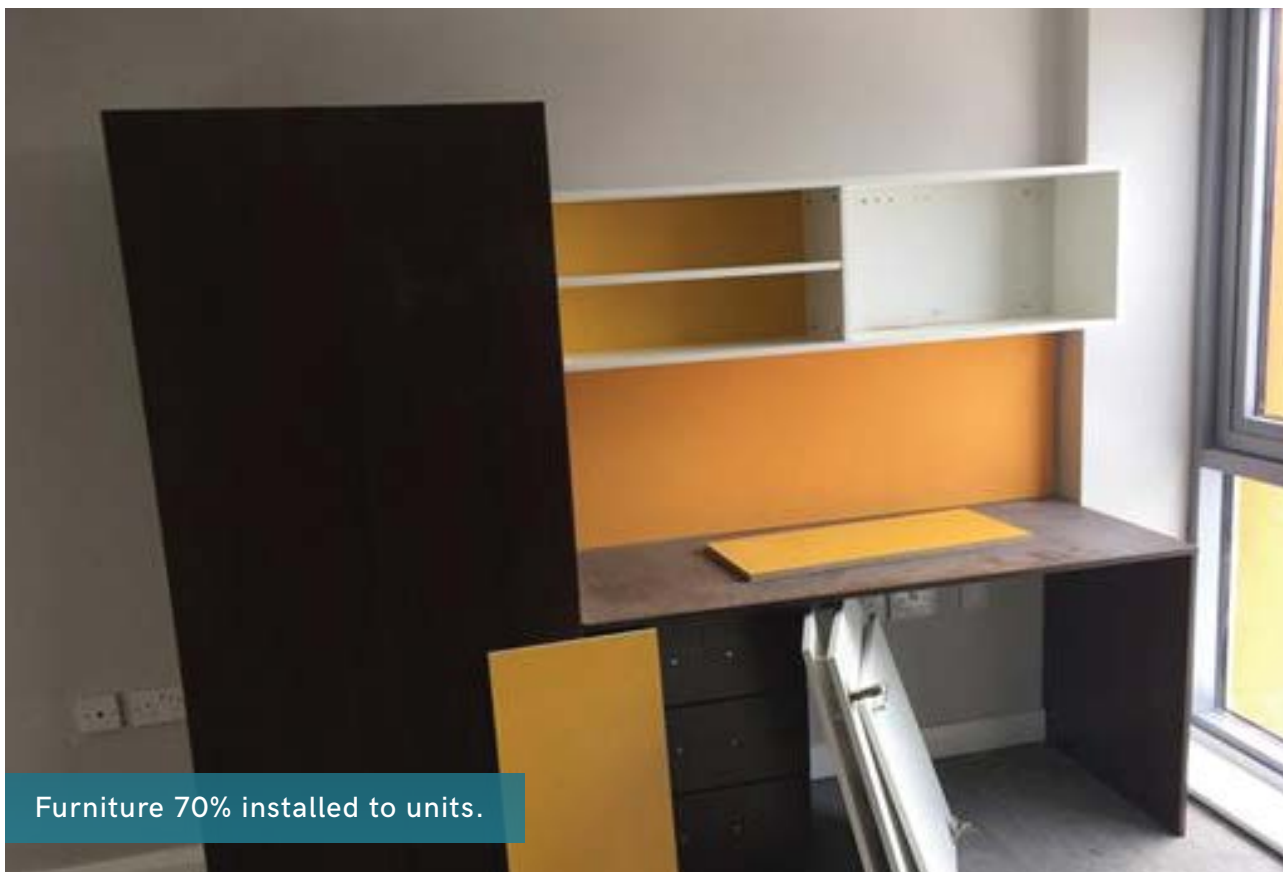
July 2019

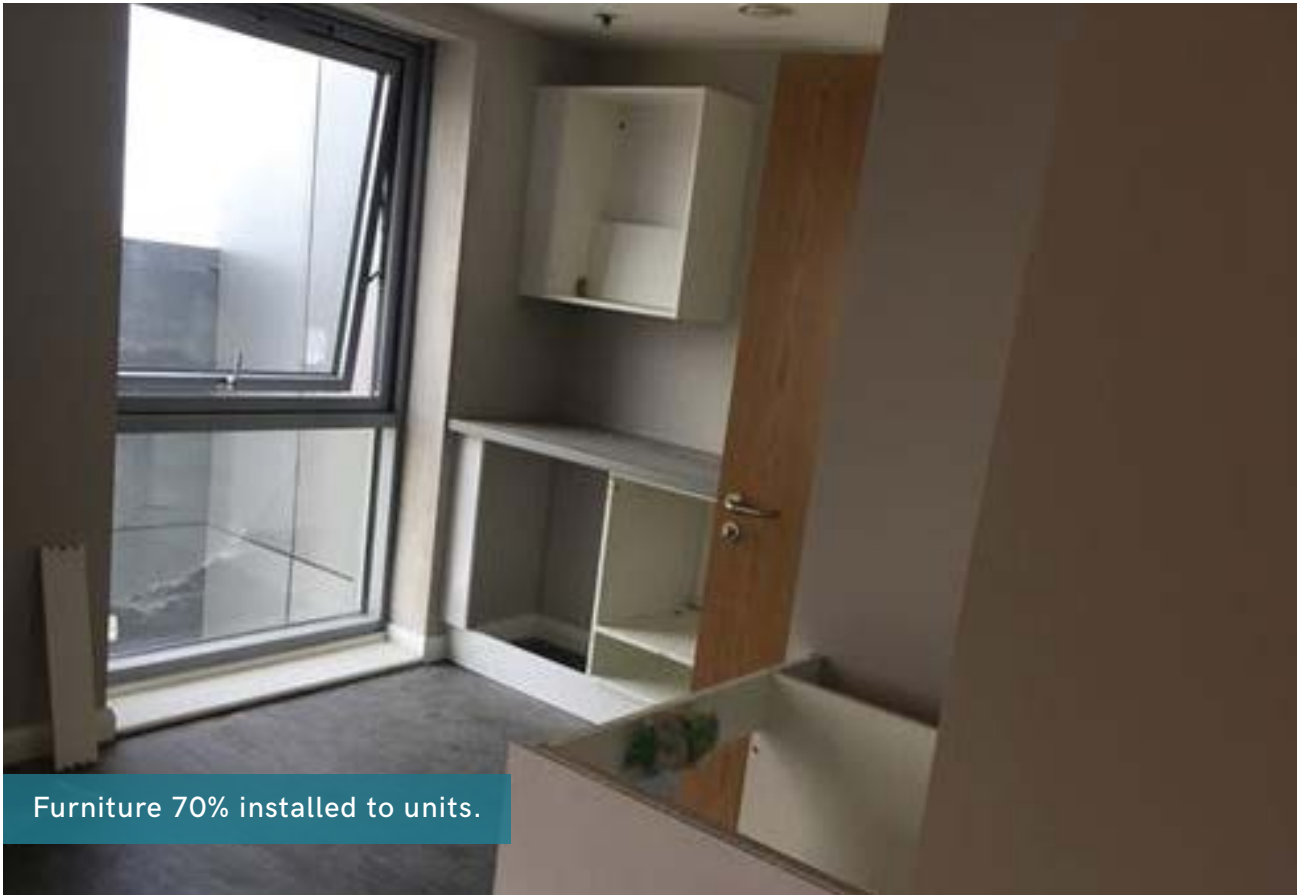
One Islington Plaza is fast approaching completion. The CP board to the externals of the build are 100% complete, as well as insulation and the roof. Windows, Pictura cladding and aluminium cladding are all 99% complete with the remaining materials ready and on site.

Inside, the beam and block floors, ground floor walls, partitions and ceilings are all fully installed. The lift is almost finished with the commissioning ongoing, and the internal doors have just 1% of progress remaining.

Mechanical, electric and plumbing works are 98% complete with the commissioning also ongoing. Furniture, fixtures and equipment are 70% installed with 30% remaining materials on site.

Final fixes are underway and EPCL await the final sign off certificates from Building Control.





Furniture 70% installed to units.



Flattening of ground in preparation for block paving.



New kerbing installed outside the development.



Level 3, North Block, Wisma Selangor Dredging,  
142D Jalan Ampang, 50450 Kuala Lumpur

+03-2162 2260

[info@csiprop.com](mailto:info@csiprop.com)

[www.youtube.com/csiprop](http://www.youtube.com/csiprop)

[www.facebook.com/csiprop](http://www.facebook.com/csiprop)

[www.csiprop.com](http://www.csiprop.com)