



ONE ISLINGTON PLAZA

CONSTRUCTION UPDATE

November 2019



ONE ISLINGTON PLAZA

CONSTRUCTION UPDATE

November 2019

On behalf of the developer, we present to you the latest images and information from the construction site of One Islington Plaza in Liverpool, UK, as of November 2019.

All studios and en suites are now complete across all floors and the majority are tenanted

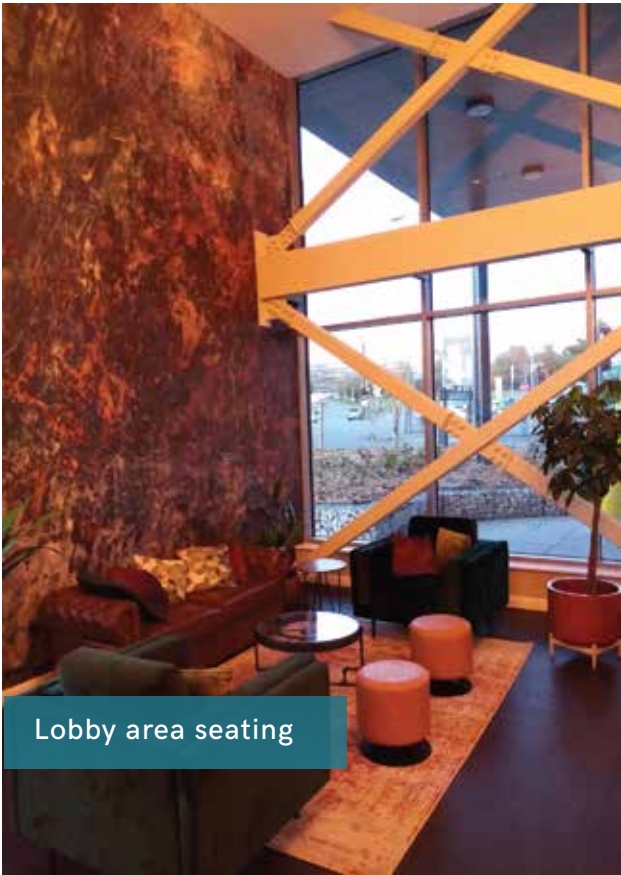
Completion notices have been issued to solicitors by Capital. Remaining studios and en suites are expected to be tenanted imminently.

Urban Student Life are now fully established as the managing agent with on-site presence.

Communal areas are providing the wow factor as minor snagging continues including bathroom mirror delivery and installation to all floors.



Lobby area



Lobby area seating



Lobby area reception desk



Resident gym

ONE ISLINGTON PLAZA

CONSTRUCTION UPDATE



Gym equipment



Resident gym weights area



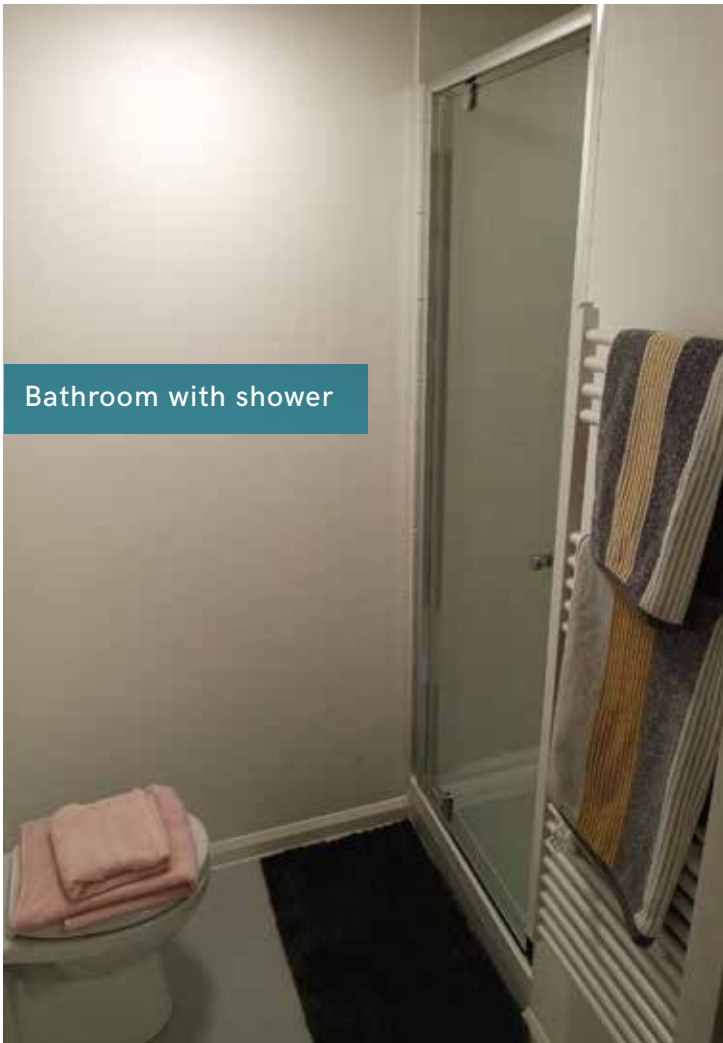
Integrated kitchen units



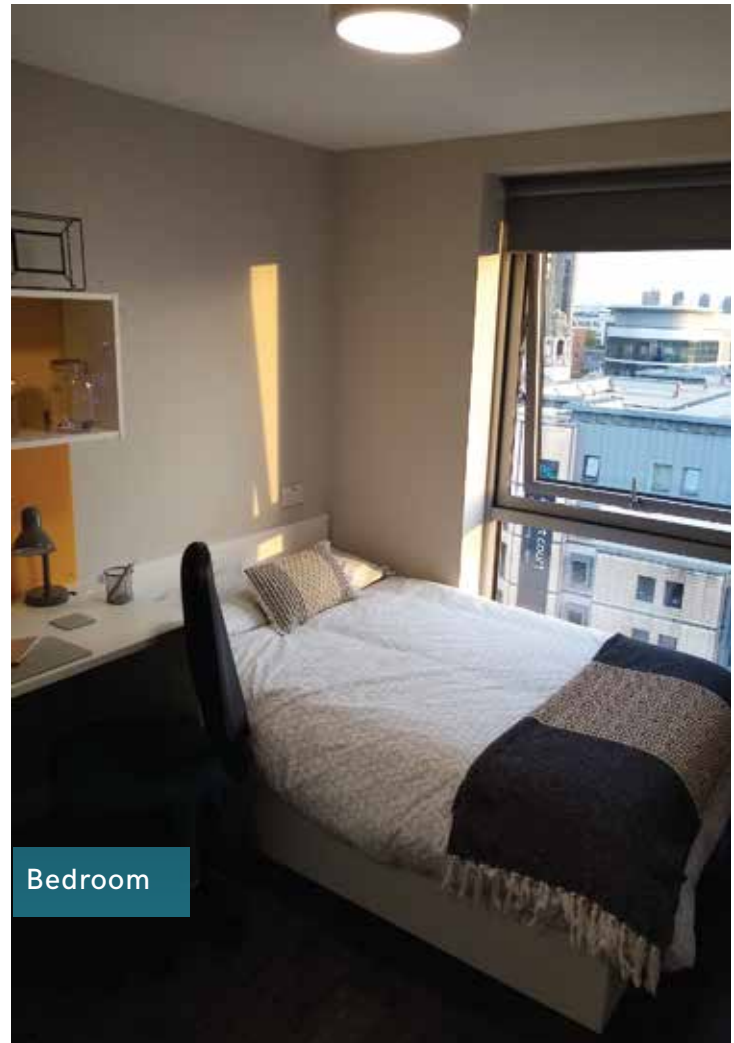
Communal kitchen area

ONE ISLINGTON PLAZA

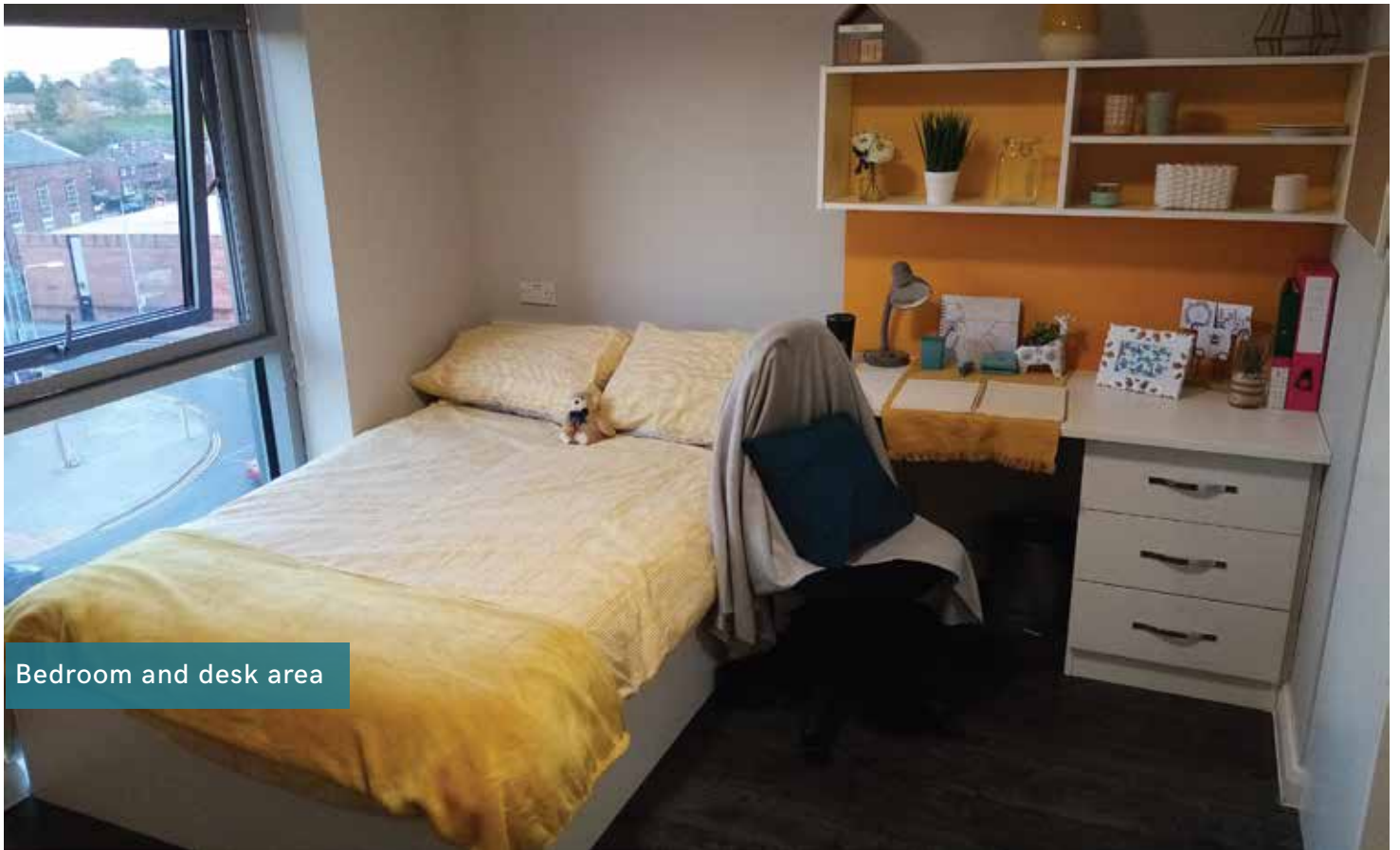
CONSTRUCTION UPDATE



Bathroom with shower



Bedroom



Bedroom and desk area



Bedroom desk area



Level 3, North Block, Wisma GER, 142D Jalan Ampang, 50450 Kuala Lumpur

 +03-2162 2260

 info@csiprop.com

 www.csiprop.com

 www.youtube.com/csiprop

 www.facebook.com/csiprop